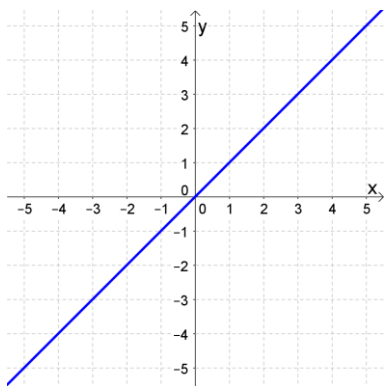
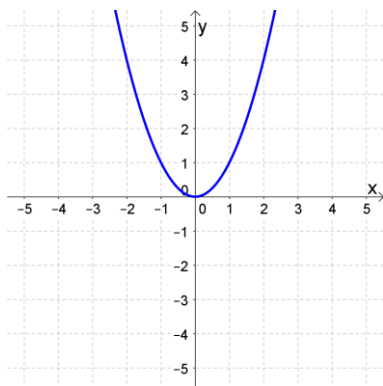


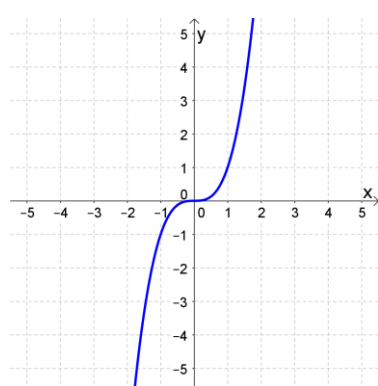
# Function Review



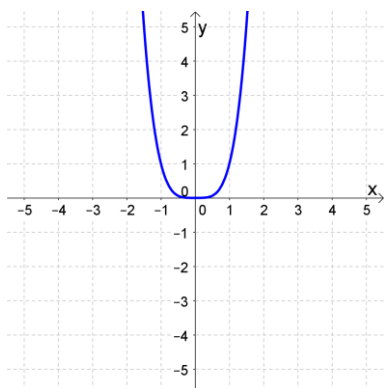
$f(x) = \underline{\hspace{2cm}}$



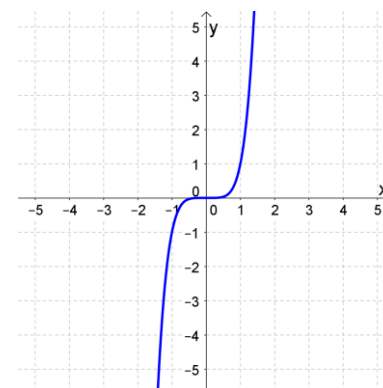
$f(x) = \underline{\hspace{2cm}}$



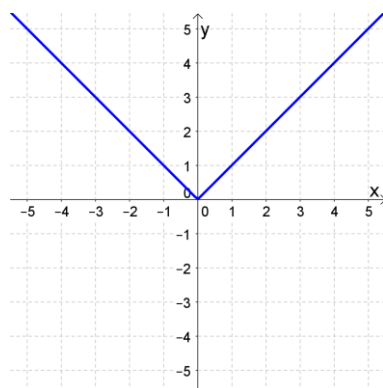
$f(x) = \underline{\hspace{2cm}}$



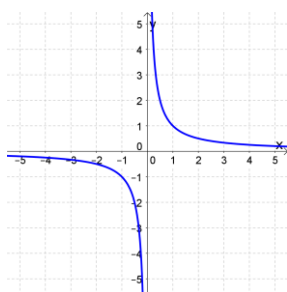
$f(x) = \underline{\hspace{2cm}}$



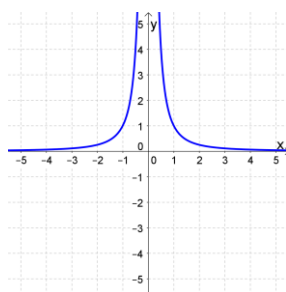
$f(x) = \underline{\hspace{2cm}}$



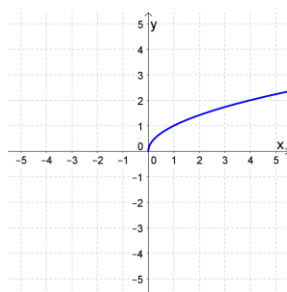
$f(x) = \underline{\hspace{2cm}}$



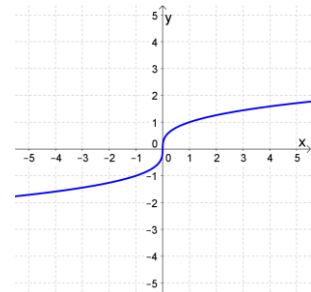
$f(x) = \underline{\hspace{2cm}}$



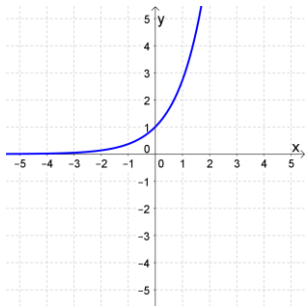
$f(x) = \underline{\hspace{2cm}}$



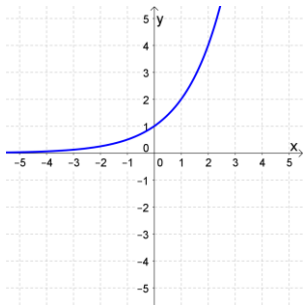
$f(x) = \underline{\hspace{2cm}}$



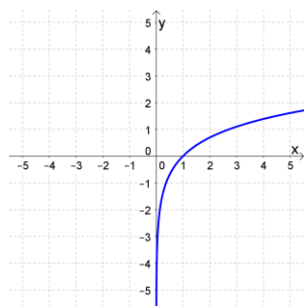
$f(x) = \underline{\hspace{2cm}}$



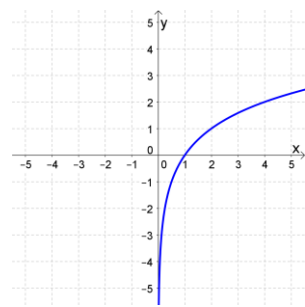
$f(x) = \underline{\hspace{2cm}}$



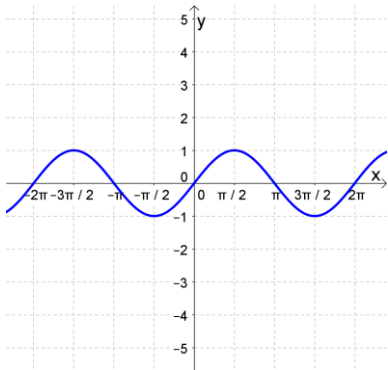
$f(x) = \underline{\hspace{2cm}}$



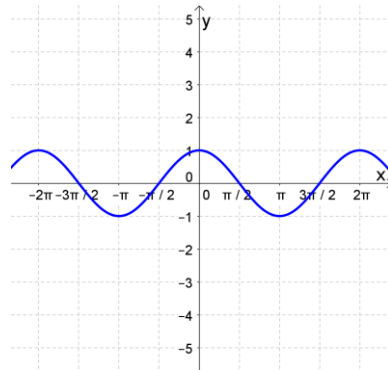
$f(x) = \underline{\hspace{2cm}}$



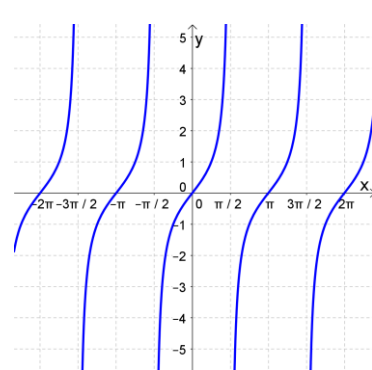
$f(x) = \underline{\hspace{2cm}}$



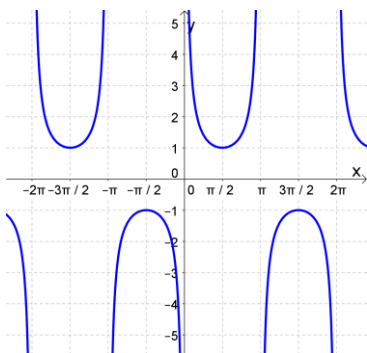
$f(x) = \underline{\hspace{2cm}}$



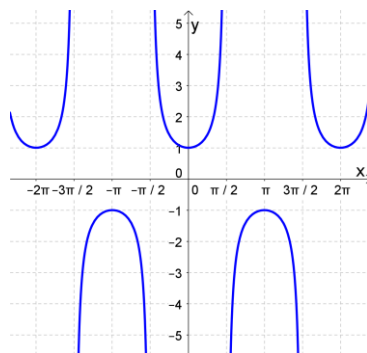
$f(x) = \underline{\hspace{2cm}}$



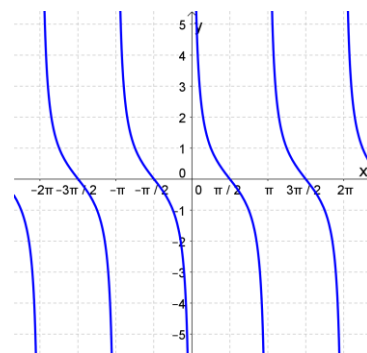
$f(x) = \underline{\hspace{2cm}}$



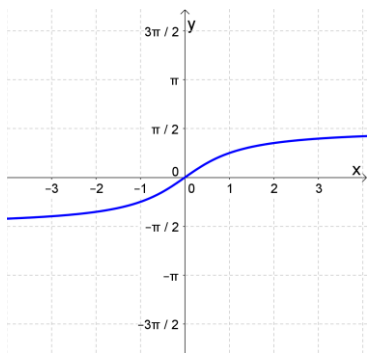
$f(x) = \underline{\hspace{2cm}}$



$f(x) = \underline{\hspace{2cm}}$

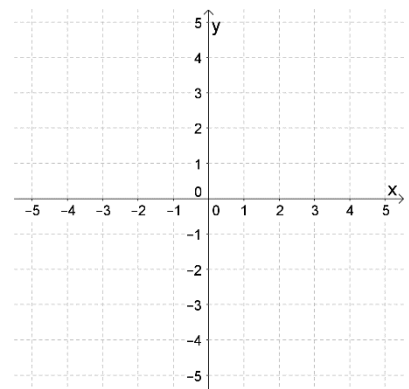


$f(x) = \underline{\hspace{2cm}}$



$f(x) = \underline{\hspace{2cm}}$

**Function Transformations**  
 For a function  $f(x)$ , and  $c > 0$ ,  
 $f(x) + c$  shifts up  
 $f(x) - c$  shifts down  
 $cf(x)$  stretches vertically (if  $c > 1$ ),  
 or shrinks vertically (if  $0 < c < 1$ )  
 $-f(x)$  reflects about  $x$ -axis  
  
 $f(x - c)$  shifts right  
 $f(x + c)$  shifts left  
 $f(cx)$  stretches horizontally (if  $0 < c < 1$ ),  
 or shrinks horizontally (if  $c > 1$ )  
 $f(-x)$  reflects about  $y$ -axis



$f(x) = -|x - 2| + 3$